

Policy: Decision Making

| Decision making policy and procedures | |
|--|------------------------------------|
| Version | 0.1 |
| Author | Maxine Taffetani |
| Approved by | Board of Healthwatch Milton Keynes |
| Date approved | 09.02.2022 |
| Effective date | 09.02.2022 |
| Review date | 01.03.2023 |

Policy Statement

Healthwatch Milton Keynes makes its decisions in an open and transparent way and ensures the interests of the people of Milton Keynes are always put first. This policy and associated procedures outline the steps taken to ensure decisions are evidence based and lead to substantive impact in the community.

As a Charitable Incorporated Organisation (CIO), decision making within Healthwatch Milton Keynes is also covered in our [Constitution](#).

The governing regulations and standards are:

- *The NHS Bodies and Local Authorities (Partnership Arrangements, Care Trusts, Public Health and Local Healthwatch) Regulations 2012 – referred to as Regulation 40 throughout this document.*
- *Freedom of Information Act 2000.*
- *Seven Principles of Public Life (Nolan Principles).*

This policy applies to all relevant decisions made by Healthwatch Milton Keynes.

Relevant decisions

Regulation 40 requires Healthwatch Milton Keynes to have in place and publish procedures for making relevant decisions. Relevant decisions include:

- How to undertake our activities.

- Which health and care services we are looking at addressing with our activities.
- The money we will spend on our activities.
- Whether to request information (*e.g. submit a Freedom of Information request*).
- Whether to make a report or a recommendation on a service or organisation.
- Which premises to enter and view and when those premises are to be visited.
- Whether to refer a matter to Overview and Scrutiny Committee (*e.g. where a service or provider doesn't respond adequately to significant recommendations for improvement*).
- Whether to report a matter concerning our activities to another person.
- Any decisions about sub-contracting other organisations to undertake work for Healthwatch Milton Keynes.

Relevant decisions do not include day-to-day activity that may be required to carry out exploratory work prior to making a relevant decision.

Who may make such decisions?

The Healthwatch Milton Keynes Board will be responsible for making relevant decisions. The Board will have the power to delegate some of the relevant decision making to the Chief Executive Officer of Healthwatch Milton Keynes, for example, small pieces of work which do not have a substantive impact on staff or financial resources.

All relevant decisions, including those delegated to the Chief Executive Officer, will be recorded in the minutes of the Board meeting at which the decision was made. The minutes of all Board meetings are published on Healthwatch Milton Keynes website once they have been agreed by the Board as being a correct record of the meeting concerned.

Once a decision has been made, the staff team is responsible for implementation and delivery, with an agreed reporting process to Board.

The Board of Healthwatch Milton Keynes will reconsider a decision where new data or information has become available, or if circumstances change, which might prompt it to reach a different decision, or where there is evidence that this decision-making process was not followed.

Involving lay persons or volunteers in such decisions

Healthwatch Milton Keynes' Board is composed of volunteers (a person who is not a paid employee of Healthwatch Milton Keynes). Healthwatch Milton Keynes intends to secure broad based views on its activities wherever possible, and involves others, particularly members of Healthwatch Milton Keynes lay people and volunteers in its decision making.

How are decisions made?

The potential scope of the work of Healthwatch Milton Keynes is vast – it has a responsibility for health and social care services for all adults, children, and young people in Milton Keynes, including those who are most vulnerable or may be excluded. This means we must prioritise the issues we focus on. The main sources to inform our work programme are likely to come from:

- People's experiences of health and social care services that they share with us.
- Evidence we proactively collect about specific areas of concern through the stories and enquiries we hear directly, including deliberative research, public surveys, and polls.
- National and local data sets that evidence issues affecting large numbers of the local population and the most excluded.

This list is not exhaustive and other relevant sources of data and insight will be considered.

In order to prioritise, Healthwatch Milton Keynes' Board will carefully consider all sources of information and decide where it can add most value. Areas to be considered include but are not limited to:

- That the issues fit with our organisational role and responsibilities, ensuring Healthwatch Milton Keynes delivers to its statutory remit.

- How much the issue matters to local people, it must be something they care about as we are here to be the voice of people in health and social care.
- How much change, improvement and positive impact Healthwatch Milton Keynes can bring about. This enables us to make sure we are choosing areas where we can have the greatest impact. This is important to deliver the greatest return for our budget, maintain our independence and ensure we bring issues to the attention of the health and care system.
- Does the change or improvement need to come from Healthwatch Milton Keynes – so we aren't focusing on things that others can do more easily and effectively?
- Finally, the Board of Healthwatch Milton Keynes will consider our work as a full set of priorities, as together they need to have the greatest impact for people using health and social care services.

Board meetings are open to the public, and minutes recording decisions will be available via the Healthwatch Milton Keynes website.

Dealing with breaches of any procedure referred to in this policy document, including circumstances in which a breach would be referred to the local authority.

If a decision is taken in the name of Healthwatch Milton Keynes without authorisation in the manner set out in this policy document, the Board will determine what action is needed. This may be to either approve the decision retrospectively, or to reverse the decision.

If the breach of the agreed procedure is considered to have also breached the grant agreement between Healthwatch Milton Keynes and Milton Keynes Local Authority, it will be reported to the Local Authority and further action agreed between the Local Authority and Healthwatch Milton Keynes.

In each eventuality, actions will be minuted and published on Healthwatch Milton Keynes' website.

Equality, Diversity and Inclusion statement

Healthwatch Milton Keynes is committed to ensuring all decisions made are free from any form of discrimination on the grounds of age, disability, gender, gender reassignment, marriage and civil partnership, pregnancy and maternity, race, religion or belief, sex and sexual orientation, in accordance with the Equality Act 2010.

Equality Impact Assessments will be completed for all activities we undertake.

Healthwatch Milton Keynes will monitor this policy in order to identify whether it is having an adverse impact on any group of individuals and act accordingly.

Review of policy document

The Board of Healthwatch Milton Keynes will review the effectiveness of the decision-making policy and procedures set out in this document every two years. Any amendments to this policy and the procedures governing the making of relevant decisions will require a simple majority of board members voting in favour.

The amended policy document will be published on the website of Healthwatch Milton Keynes as soon as is practicable.

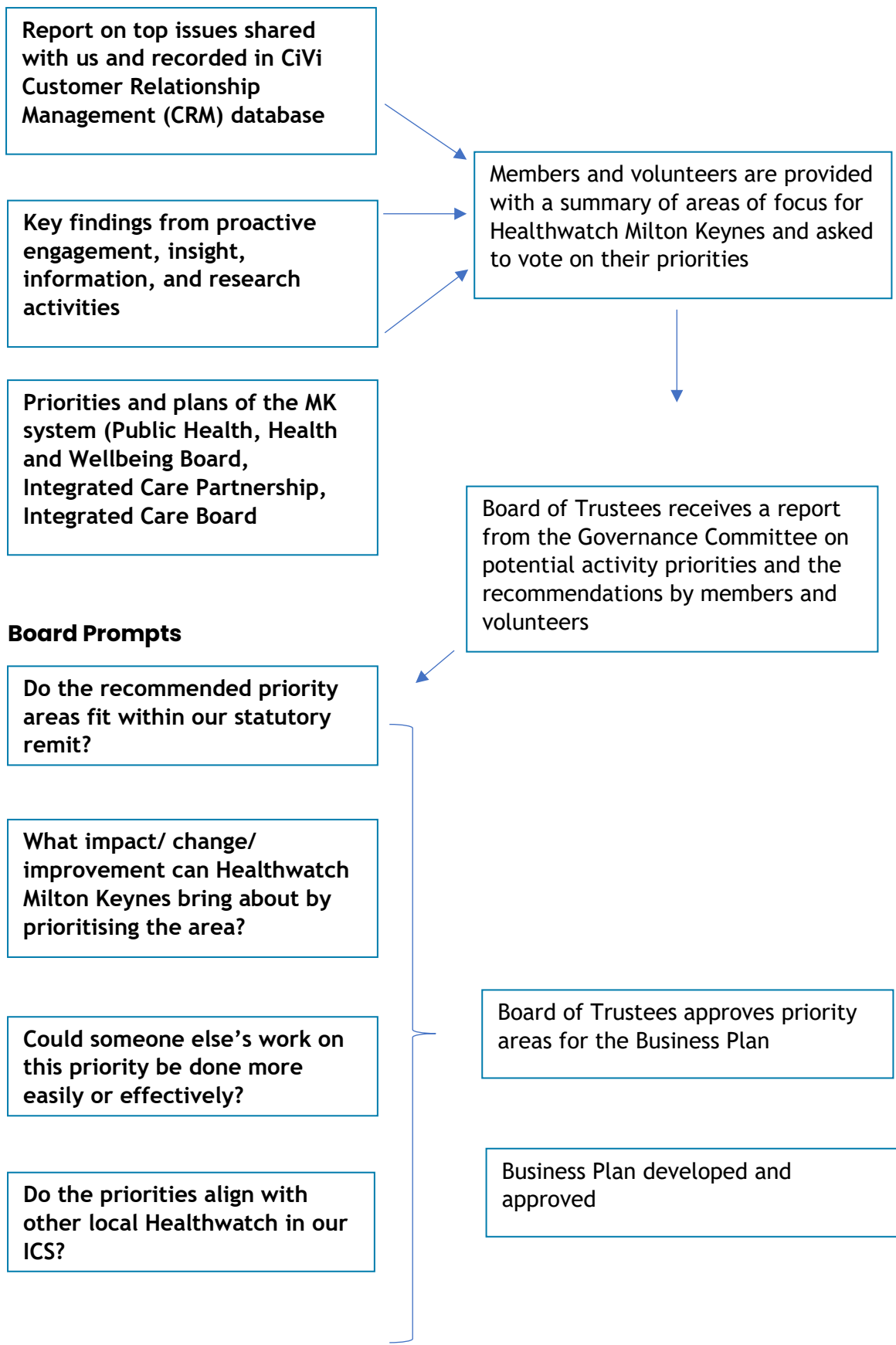
Procedures

Healthwatch Milton Keynes undertakes to carry out the following procedures:

- Publish Healthwatch Milton Keynes' most up to date policy document on Healthwatch Milton Keynes' website.
- Review and obtain Board approval to Healthwatch Milton Keynes' decision-making policy every two years.
- Ensure all Healthwatch Milton Keynes staff are familiar with the policy and refresh their understanding and awareness of the need for open and transparent decision making by reading the policy on a regular basis, at a minimum after review by the Board.
- Publish minutes from Board meetings where decisions are made in a timely manner on Healthwatch Milton Keynes' website. Where

decisions are made outside of board meetings, they will be ratified at the subsequent Board meeting.

Annual Business Planning – Decision Making Flowchart



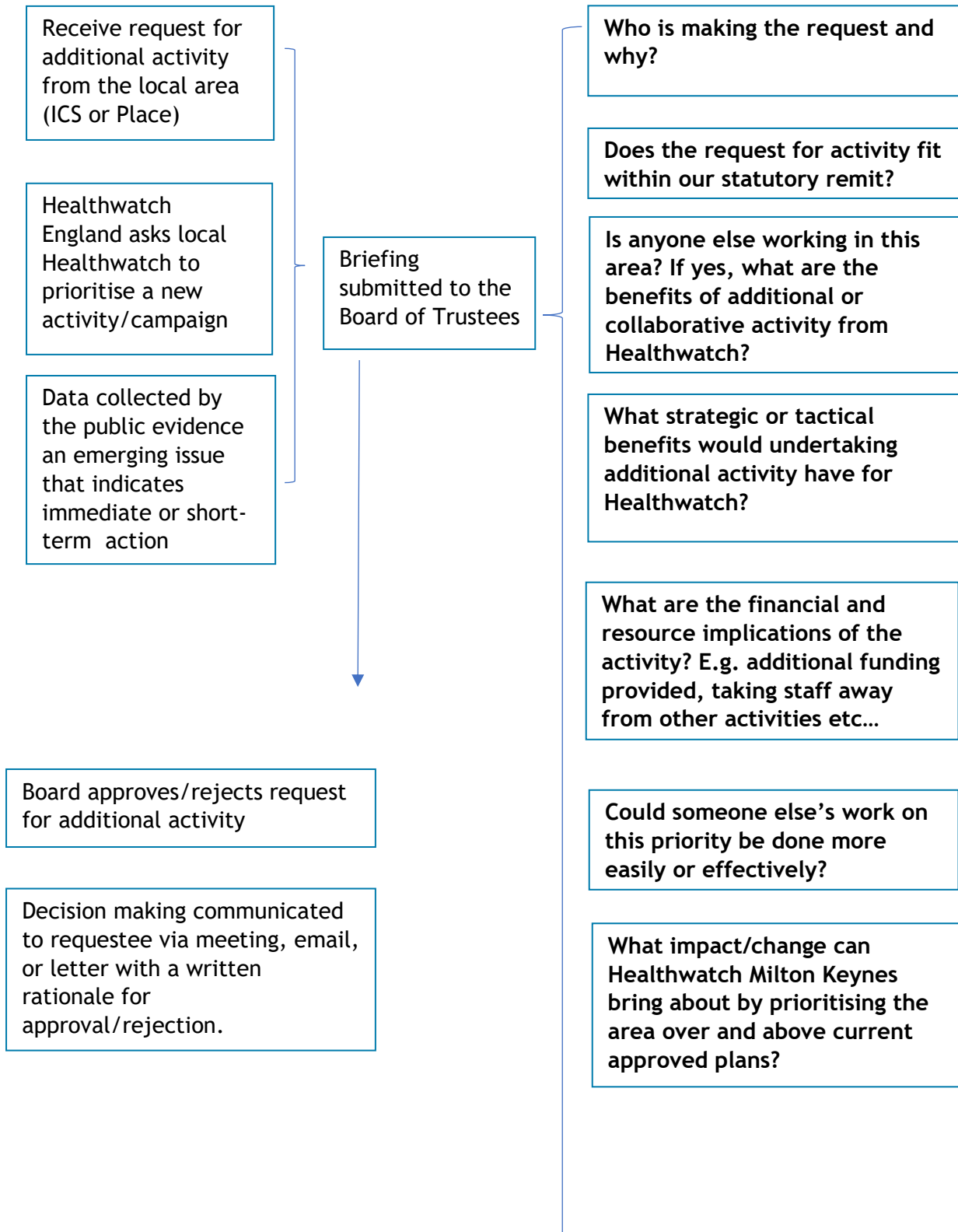
**As a full set of priorities together, are they effective?
Would prioritising other areas together provide opportunities for greater impact overall?**

Decision making communicated to members and the public through:

- Published Board meeting minutes
- Member Communications
- Published Business Plan Summary

Priorities and requests for activity outside of Business Plan

Decision Making Framework



Board decision communicated to volunteers, members and the public through:

- Published Board meeting minutes
- Member Communications

What strategic or operational risks arise from the additional activity e.g., risk of poor quality of outcomes if staff stretched too thin

Have we sought the views of volunteers, members, or the public on the request?